

‘Quick Start’ Guide for Brake Dyno- ‘Chassis’ Type (open loop)

(see www.DTEC.net.au for ‘Quick Start’ guides on other dyno types)

‘Quick Start’ Guide: Version BC 8.3 (≥ V3.3.0)

DISCLAIMER: This software and hardware is provided "as is" without warranty of any kind, either express or implied, including, without limitation, any warranty of merchantability and fitness for a particular purpose. In no event shall the creators of this software be liable for any direct, special, incidental or consequential damages arising out of the use or inability to use the software. The creators and distributors of this software shall not be liable for any loss, damages or costs, arising out of, but not limited to, lost profits or revenue, loss of use of the software, loss of data or equipment, the costs of recovering software, data or equipment or claims by third parties, damage to equipment, or other similar costs.

For continuous product improvement and due to ongoing development, we reserve the right to alter specifications without notice.

WARNING: This hardware and software is protected by law and international treaties. Unauthorized reproduction or distribution of Dynertia, or any portion of it, may result in severe civil and criminal penalties and will be prosecuted to the maximum extent possible under law.
Dynertia software, hardware & firmware is copyright- Darren Todd 2022



STOP !!!

Important notice
To be read in conjunction with the main manual!

The following 'Quick Start' guide contains basic information for your Brake dyno ('open loop' chassis type)

Note: Basic DYNertia system alone does not control the actual brake/retarder load, this must be manually controlled. It has 'open loop' functionality i.e. you cannot enter an RPM and have DYNertia3 vary the load to maintain that RPM automatically.

This is a brief overview of some main operations, it builds the base that will allow understanding of the features explained in the main DYNertia3 manual.

Tip- There are sample test Runs installed along with DYNertia3 software so you can learn to use many of the features without needing to perform actual 'Runs'.



Table of Contents

Concept.....	4
Types of testing used with brake (retarder/absorber) style dyno's	4
Mounting the DYNertia3 Sensor and Magnet	5
DYNertia3 Control Unit Mounting	6
Wiring (basic only for initially testing)	7
Wiring of the load cell (including pressure sensor style)	8
Example of typical wiring (additional devices shown)	9
'Linking' Hardware to PC	10
Two Main DYNertia3 Windows (DYNO / GRAPH)	11
Basic Hardware Settings.....	12
Basic Software settings (default)	13
Quick Test of Dyno Speed Sensor	13
Load Cell Setup & Calibration	14
Sensor Calibration	14
Displaying Engine RPM (One Method)	16
Performing a Brake 'Ramp' Test Run	17
You are now ready to perform a test!.....	17
Observing the engine data	18
Performing a Brake 'Steady State' Test Run	19
Steady state tuning by monitoring live torque and power.....	19
Steady state testing using 'Step testing' (or 'Point by Point' as we call it)	19
Viewing/Loading of Runs ('Graph' Window).....	20
Loading test Runs into the Graph Window to view and analyze	20
Finding Folders to view or to save tests into	21
Creating/Deleting new Folders to save tests into	21
Basic Analysis of Saved Data	22
Windows for Further Analysis of Saved Data.....	23
Shortcut Keys	24
Troubleshooting	25
Assessing test results- Poor settings.....	25
Assessing test results- Signal issues.....	26



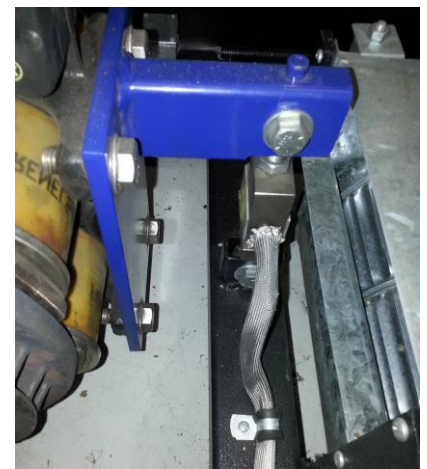
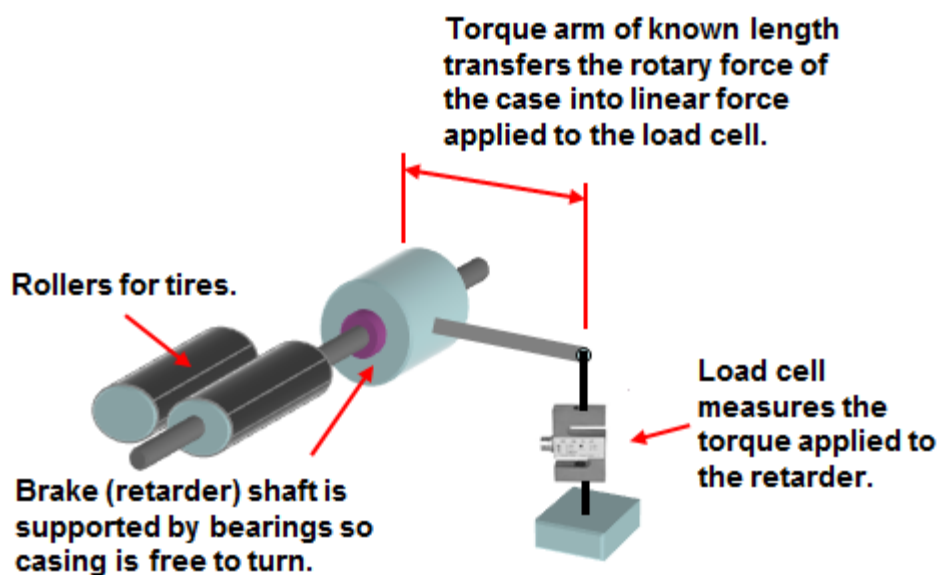
Concept

Brake (or absorber) style dyno's rely on a device to apply load to the engine. In a chassis dyno, this device absorbing the power (we will use the term 'brake' or 'retarder') is generally mounted on the end of the rollers shaft so its case could rotate as a load is applied if unrestrained. It is this rotational force that is measured to calculate the torque.

The case is attached to a load cell sensor via a 'torque arm' that transfers the rotary motion into the linear one applied to the sensor.

The length of the arm acts as a lever, so this can be designed to suit the measuring range of your load cell and give appropriate sensitivity (or even made with several load cell attachment points for variability).

Note: We use the term "load cell" here for our 'torque sensor', but this can be an alternative style such as a hydraulic master cylinder and pressure sensor or even a mechanical spring and coil type 'potentiometer'.



If we know the force (in Nm allowing for the length of 'torque arm') applied to the load cell and the RPM of the shaft we can calculate power by the metric formula $Kw = (Nm \times RPM) / 9549$, this will be power at the wheels. By using a chassis dyno we can have a very convenient and quick way of testing modifications, unfortunately the effect of drivetrain losses and tire losses do have an impact.

See www.DTEC.net.au website 'downloads' for information ('Brake Chassis Design Tool')

The DYNertia3 controller senses the speed of the brakes rotating shaft and outputs this data, along with the load cell information to the PC for analysis and storage.

The included 'DYNertia3' software package handles all the functions required of dyno acquisition: setting up, saving runs, correcting for atmospheric conditions, filtering, displaying data, printing, overlaying and analyzing multiple runs.

Types of testing used with brake (retarder/absorber) style dyno's

Two main tests can be performed with a brake style dyno, a 'ramp run' or a steady state 'point to point' test-

A 'steady state' test (or 'point to point' as we call it) is where the load is applied until the engine RPM reaches a desired set point (with a fixed throttle opening) and data is then recorded upon a button press. A graph is built up and displayed based on these recorded data points.

A 'ramp' test is performed by adjusting the brake load to allow the engine to accelerate through the RPM range whilst DYNertia3 graphs the Power using the load cell as a Torque input.



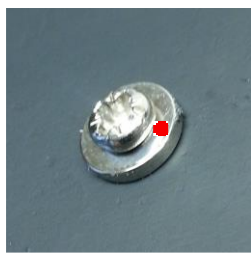
Hardware Mounting & Basic Wiring for Initial Setup

Mounting the DYNertia3 Sensor and Magnet

Mount the sensor system to detect the rotation of the roller/hub.

NOTE: Do not mount the magnet at the outside diameter of the dyno roller/hub as the centrifugal forces will be highest; choose a location towards the centre area. The magnet is also very fragile and must be handled with care!

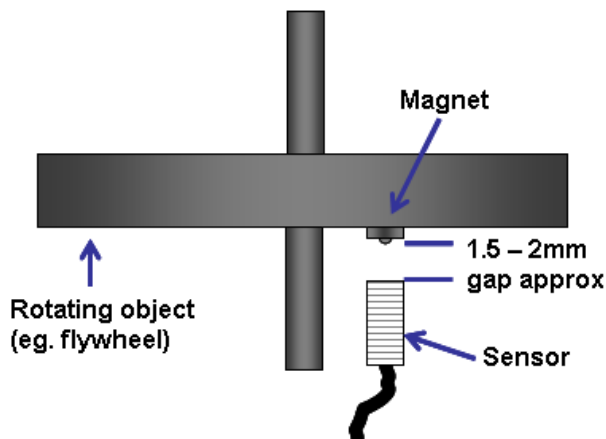
NOTE: The included sensor will only detect the 'South' Pole of a magnet, so the magnet must be have the South Pole (marked with red paint) facing the sensor!!



Mounting by screwing/gluing flat to dyno roller/hub-

Dyno roller/hub is drilled and tapped for 4mm screw (3.3mm drill size is usual for 4mm tapping). Short (min 6mm) screw inserted into magnet. Do not over tighten or magnet may crack!

Magnet epoxy glued and screwed to dyno roller/hub with South Pole outwards.

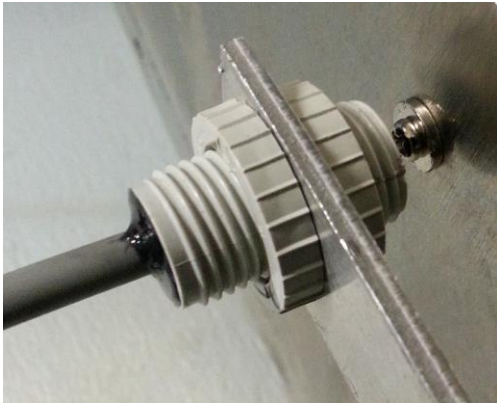


The sensor face **must be positioned 1.5 - 2mm** from the magnets **South Pole** (or the head of the screw if one is used to secure magnet).

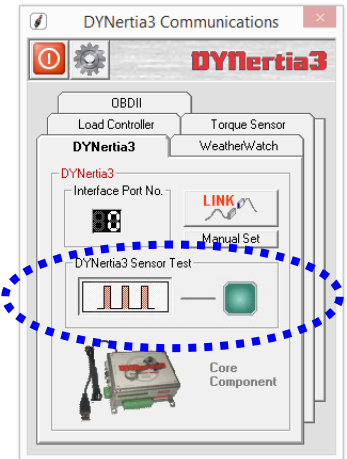
DYNertia3 Quick Start (Brake OL- Chassis type)



A16mm diameter hole is required to mount the sensor. Do not over tighten the lock nuts or they will be damaged. A small 'blob' of silicon sealant or similar is applied to the edge of the nuts to stop them loosening with vibration.

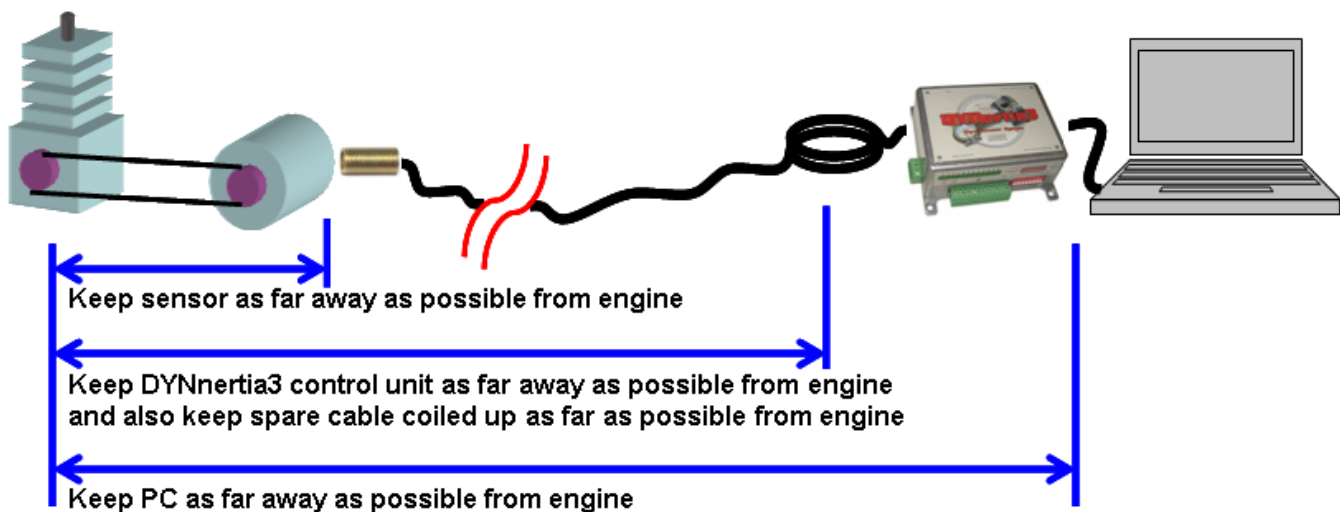


Tip- After the 'Linking' process (discussed later) the sensor operation can be checked via the button "DYNertia3 Sensor Test". The indicator and an audible noise can be used to confirm sensor operation during slow rotation. The indicator lamp/noise triggers for a short time as the magnet approaches the sensor (only on approach).



KEY POINTS- 1.5 – 2mm gap. Safe magnet mounting, South Pole (marked with red paint) of magnet facing towards the sensor!

DYNertia3 Control Unit Mounting



1) Mount the sensor unit at the furthest distance (**'every inch counts'!**) from the engine as possible. Route all cables as far as possible away from the engine (and any electric motors such as cooling fans) and keep the controller and PC at a distance. Coil any spare cable up neatly at the PC. Keep the sensors lead away from the USB lead or any other wiring.

It's best to route cables inside a protective metal tubing or keep separated from the engine by mounting behind the earthed metal of the dyno frame or shields. Secure at the DYNertia control unit to prevent movement of the cables.

DYNertia3 software can even be operated by remote control if required (wireless keyboard or a PC 'page turner' as one option), tests can be started and stopped and new files even created (names incremented).

2) Always use resistive Spark plugs and suppressed Spark plug leads to prevent interference (at least during testing).

Tip- A suppressed spark plug lead from a car can be put in series with the existing spark plug to reduce interference.

This additional spark lead is essential on many go-kart engines as they have particularly 'noisy' ignition systems!

Wiring (basic only for initially testing)

Dyno only needs the USB and the speed sensor connected for use.



NOTE: Until correct dyno operation is confirmed and some trial runs have actually been done –

Do not connect any Data acquisition inputs

Do not connect anything to the “RPM Adapter” input, including the ‘RPM adapter’ (if you have one)



Wiring of the load cell (including pressure sensor style)

Only input **channel 5** can be used as Torque input from a load cell (preset in software when 'brake' type dyno is selected). If the input is greater than 5V then use external resistors to reduce the voltage range (see chapter 'Inputs-Using' for details).

Load cells produce only tiny voltage changes so will need an additional amplifier (transmitter) to create a usable voltage output.

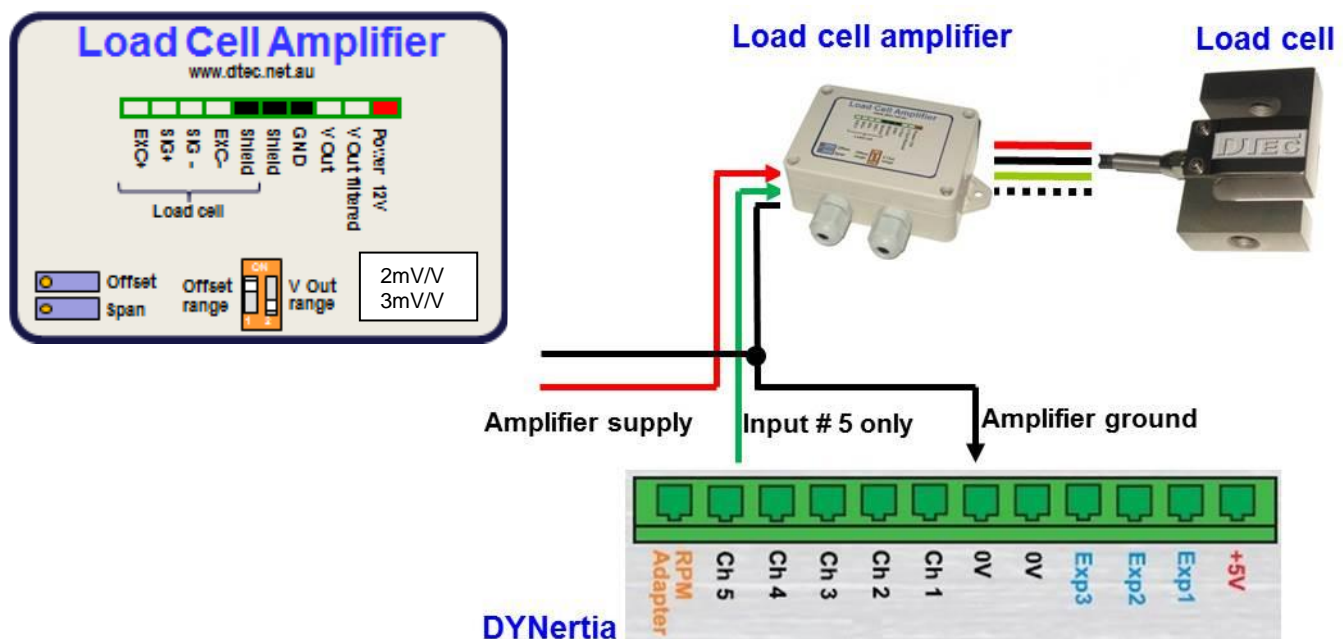
The sensor must be calibrated properly and this is done via the guided menu steps that will be shown later that assist in adjusting the load cell amplifier.

Note: If a hydraulic load cell with pressure sensor is used, this will connect into Channel 5 of DYNertia in place of the load cell amplifier output. This will require a manual setup as there is no amplifier to adjust so the guided calibration will not be of value.

For manual setup please see 'Manual Sensor Calibration' in this chapter and referring to chapter on 'Inputs-Using'.

Please refer to the manual of your Load Cell amplifier and Load cell for further details, colours and connections.

Note: With a DTec load cell amplifier use the "V Out filtered" output connection to connect to DYNertia.



Load cell to amplifier connections will depend on your chosen load cell and amplifier. Generally the following is a guide:

Red = excitation +ve, **Black** = excitation -ve

Green = signal -ve, **White** = signal +ve

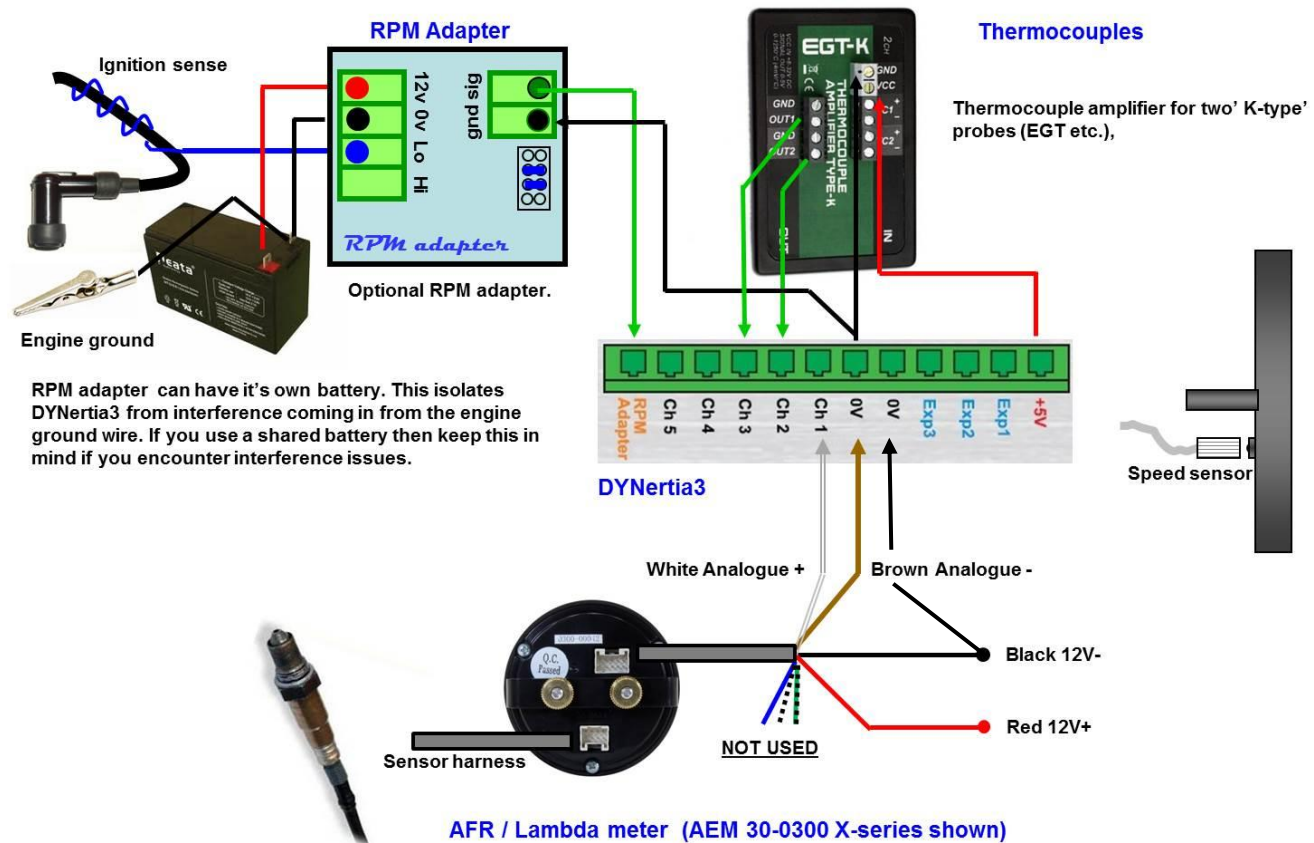
Tip- If you wish to reverse the operation of the load cell (perhaps you will operate brake system in the reverse direction) then you can wire in a simple switch to reverse either the load cells excitation wires or output signal wires.

Note: Applying load to the sensor in the operating direction should make the load cell amplifiers output voltage rise!

Example of typical wiring (additional devices shown)

NOTE: Make sure you have successfully completed the basic installation before connecting ANY sensors or even the 'RPM Adapter' to the DYNertia3 Control unit!

Please refer to the main DYNertia3 Manual (found under 'Help' menu) chapter called 'Inputs- Using' for full wiring details on connection of optional data acquisition devices or 'RPM Adapter'.





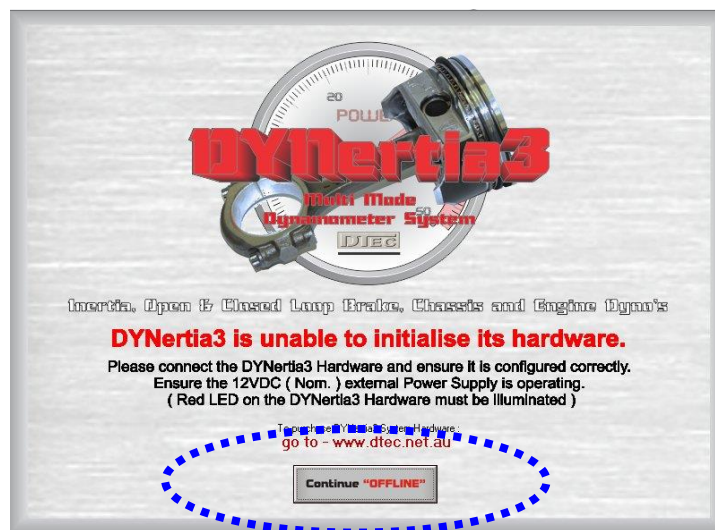
'Linking' Hardware to PC

Do not run other programs when using DYNertia3, background processes could interfere.

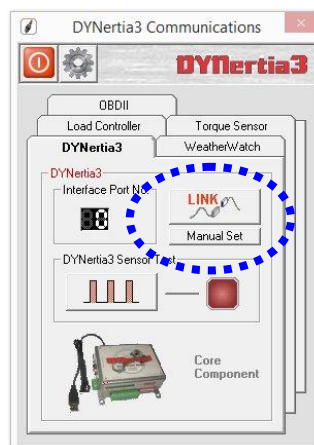
1. When you first run DYNertia3 you will be shown this Window. Press the "Continue **OFFLINE**" button, this is necessary as DYNertia3 software does not yet know what PC communication port your control units are connected to, it must be first 'Linked'.

Once 'Linked' DYNertia3 will automatically find the hardware in future when it is connected, powered and the software is started. If you plug DYNertia hardware into another USB port you may need to re-link.

This Window will also appear whenever DYNertia3 is started and the control units are not connected, powered or 'Linked'. Pressing the "Continue OFFLINE" button allows you to continue to use DYNertia3 software to view and analyse data 'off-line' (i.e. with no hardware connected to the PC).



2. Plug the USB lead in, start DYNertia3 software, select the menu option "Setup" and then choose "Communication" and then press the "LINK" button to DYNertia3 to automatically configure the port interface. Then repeat for 'Weather Watch' if connected.



With the USB connected to DYNertia the status LED (next to the sensor connector) will blink twice at first to indicate microprocessor is initialising. After this the LED will illuminate to indicate power.

DYNertia3 Quick Start (Brake OL- Chassis type)

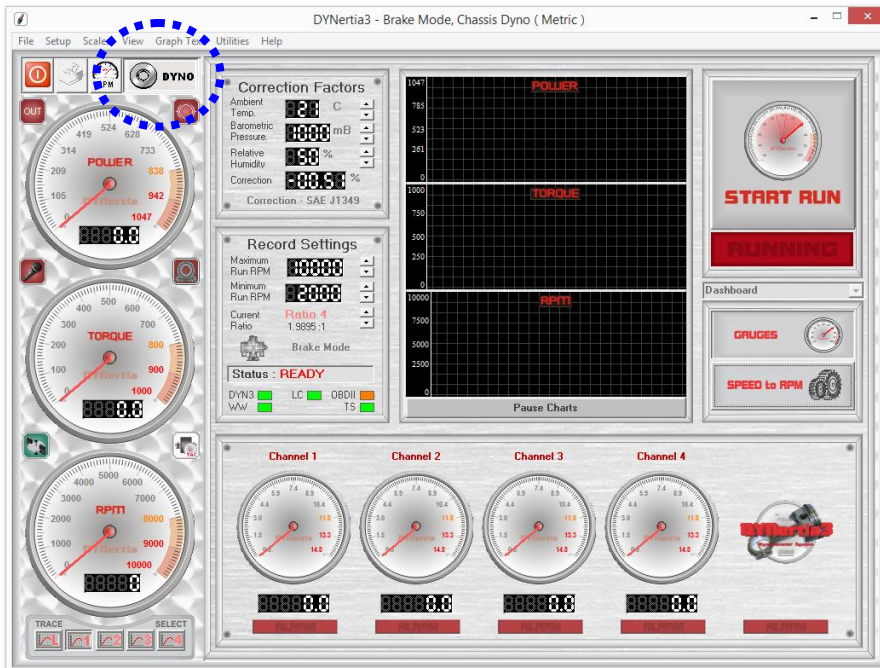


Two Main DYNertia3 Windows (DYNO / GRAPH)

Press the “**DYNO**” / “**GRAPH**” button to change between the 2 main Windows of DYNertia3.

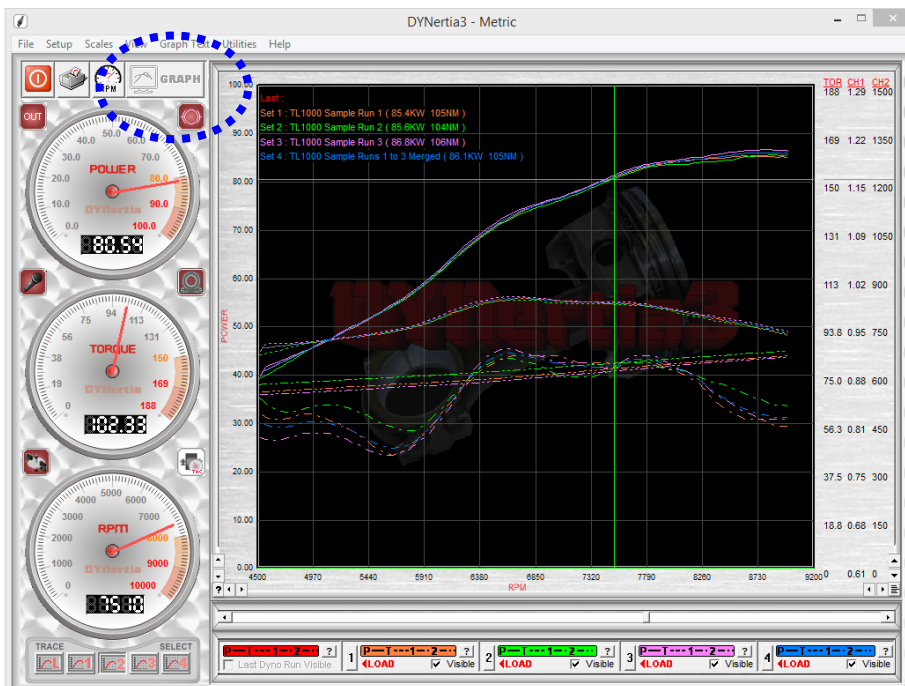
The ‘**DYNO**’ Window is used to select and create files, enter the weather details, record vehicle test data, ‘teach’ gear ratios, view RPM/speed and control the testing.

Note: This Window is only visible when the control unit is connected, powered and ‘Linked’.



Note: The Row of gauges (input channel data) shown along the bottom of the screen are visible with a single monitor. With dual monitors this data is displayed on the second monitor instead and replaced with the test ‘comments’ field (also found in ‘View’ menu).

The ‘**GRAPH**’ Window displays the Power and Torque as traces that can be overlaid and analysed. Traces from a test Run can be selected, loaded from file and compared.



Note: The ‘Setup’ menus (and most menus) discussed in the following pages are only accessible from this GRAPH screen (they are ‘greyed’ out in DYNO screen)



Note: The RPM/Speed button makes the software use either units of RPM or speed (e.g. kph) for the controls, displays and graphs.

Note: When test Runs are visible on the graph we refer to them as ‘traces’.

Note: The DYNertia3 Window does not size itself to the PC screen, if you wish you can adjust your PC screen resolution to best suit (Program Window size is 1024 x 768)



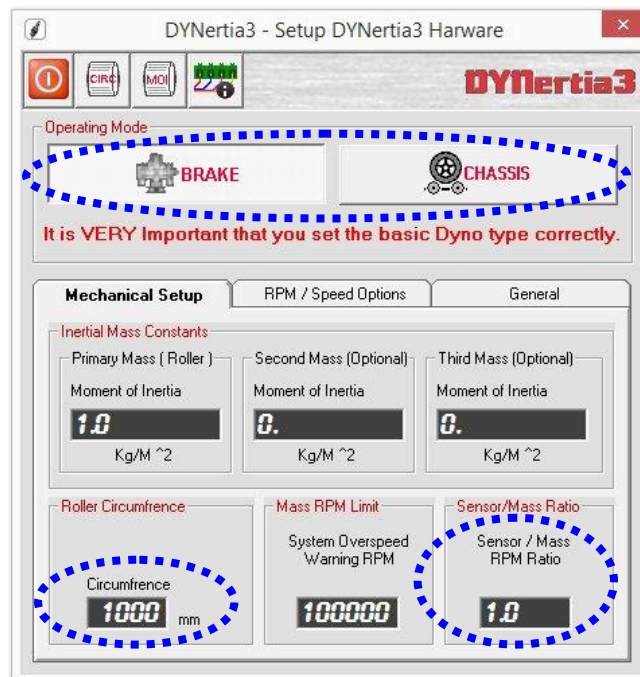
Basic Hardware Settings

As an example we will perform both a 'steady state' test and then a 'ramp' test, we will save the results and look at basic analysis of the data.

We will assume the brake is driven directly by the roller. This is common when eddy brakes are used on chassis dynos.

Assumed is also that DYNertia3 sensor is picking dyno RPM up from the brake (load) shaft and your load cell has been wired to input channel 5 and calibrated as required.

At the top Left of the Window you will find the menu options. Under the menu option "Setup" you will find "Hardware".



Ensure 'BRAKE' mode is selected.



Select 'CHASSIS' dyno type.

Roller Circumference: Enter roller circumference (1000mm in this example) to ensure speeds displayed (kph/mph) are correct

Sensor / Mass Ratio: As you are using the recommended and supplied sensor and magnet ensure it is "1".

Leave other settings in their default position as shown, especially DO NOT choose any alternative RPM source.

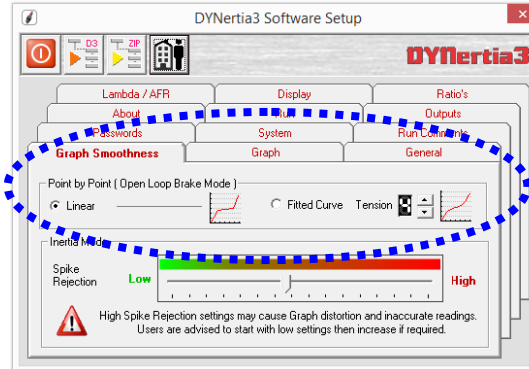
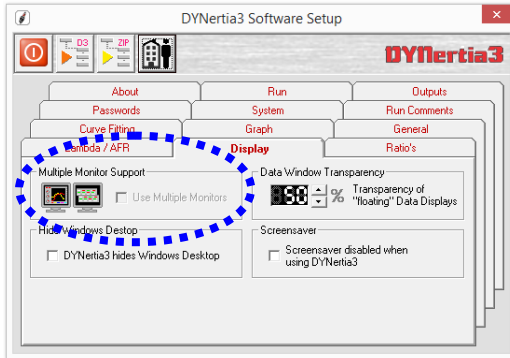
Note: Your dyno's inertial mass will be needed later if you choose to test with Inertia correction (critical for ramp testing) or do a 'losses' rundown (see main DYNertia3 manual in setup/hardware section for details).

DYNertia3 Quick Start (Brake OL- Chassis type)



Basic Software settings (default)

Shown below are the software settings (menu choice 'Setup/Software'), see the main DYNertia3 manual for any details. Leave the settings at default (except multiple monitor if possible), but take the time to see what options are available—



Note: The option “Multiple Monitor Support” is strongly recommended. Having two monitors allows additional functions.

In ‘Point by Point’ testing mode we can choose how to join up the individually recorded data points to create a trace.

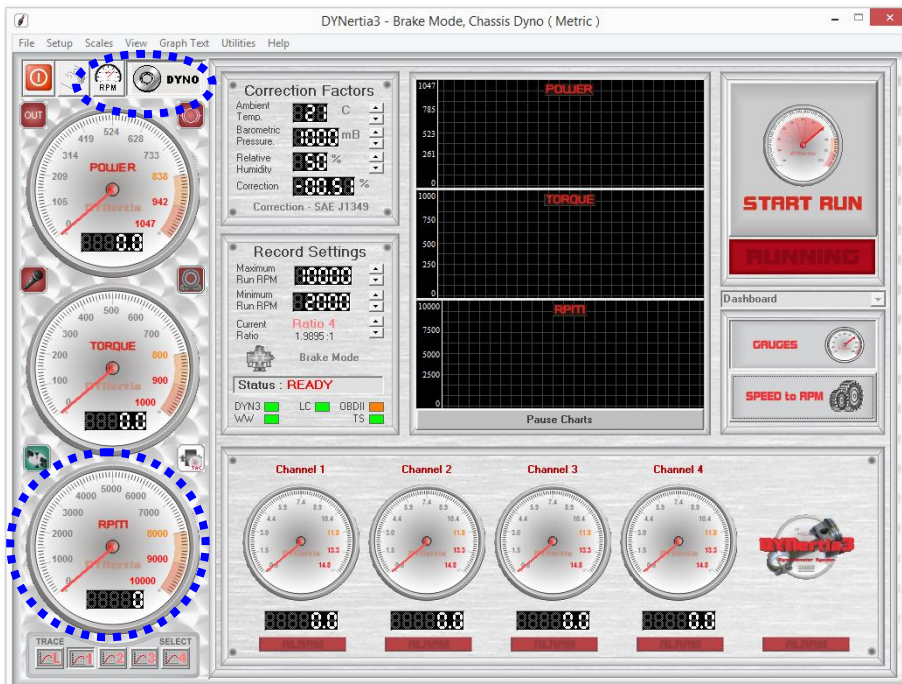
“Fitted Curve” provides a mathematically smoothed line that can be adjusted using the tension setting (how close the line comes to the data points).

“Linear” setting just joins the data points without smoothing; it is best used if data points are not too far outside expected values, perhaps due to recording some data when the dyno system had not yet stabilised at the fixed RPM.

Quick Test of Dyno Speed Sensor

Before performing testing it is advisable to do a quick function check. Open the main ‘DYNO’ Window and observe the RPM gauge while vehicle is turning the dyno.

It is often worth a quick look before dyno testing to check for a steady and accurate reading as this will show the RPM ratio setup is correct and the speed sensor is operating.



At this stage of setup the gauge will just be displaying dyno roller RPM, not engine RPM as no drive ratio has been specified

It may require you to rescale to observe the reading. See ‘Note’ below.

The software will not display at very low RPM, so drive at reasonable speed.



The RPM/Speed button makes the software use either units of RPM or speed (e.g. kph).

Note: The scales of the gauges used during actual testing can be altered in the menu option ‘Scales’ (when analysing existing runs they are automatically scaled).

Note: In inertia dyno mode the ‘Torque’ and ‘Power’ displays do not show data during a test, these are for analysing data after a test.

DYNertia3 Quick Start (Brake OL- Chassis type)

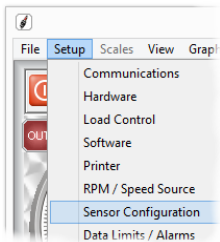


Load Cell Setup & Calibration

Calibration is performed by noting the voltage from the load cell at rest (this is zero Nm) and then apply a known weight to the Torque arm so that this represents the Torque level you wish to measure

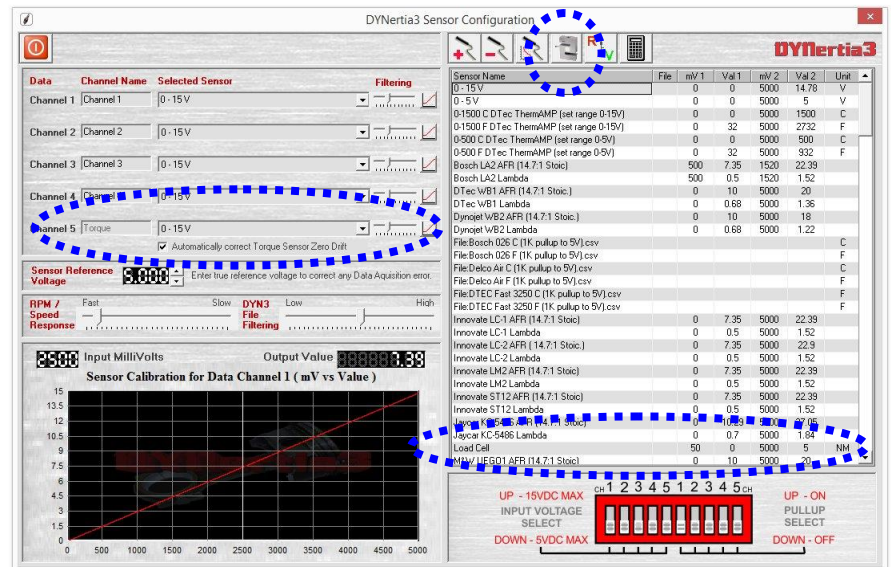
This also involves setting up the load cell amplifier so that the voltage output range is also effectively used. A guided menu process can be used as outlined below. Manual entry of the data can be also made by recording it in the 'Sensor Configuration' and entering the data in Nm at 0mV and 5000mV (see main manual for details if required).

Sensor Calibration



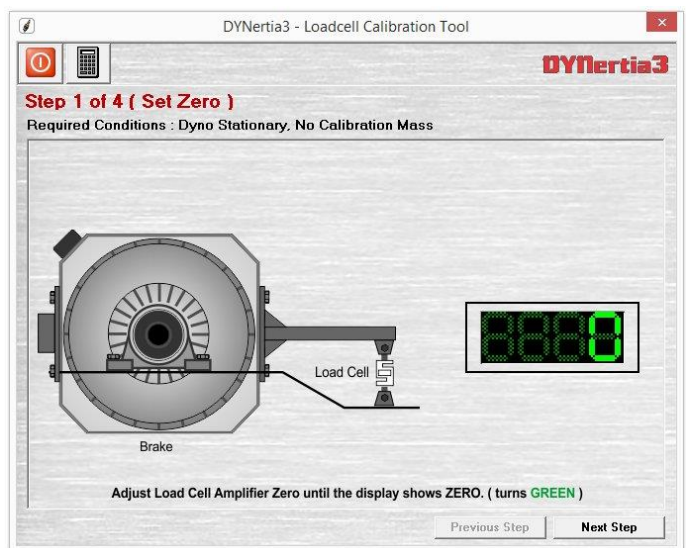
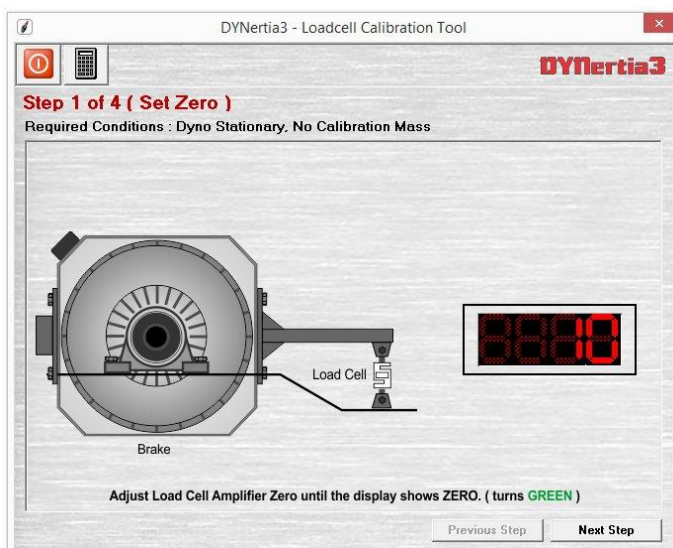
Within the menu 'Setup/Sensor Configuration' is this button (load cell icon) that opens the sensor calibration screens shown.

Note: This guided calibration procedure allows for automatic 'zeroing' of the load cell during use (it leaves a small 100mV offset voltage so DYNertia3 software can read a negative load if required). If you wish you can turn off, deselect "Automatically correct torque sensor for zero torque drift" in menu 'setup'/'sensor configuration'

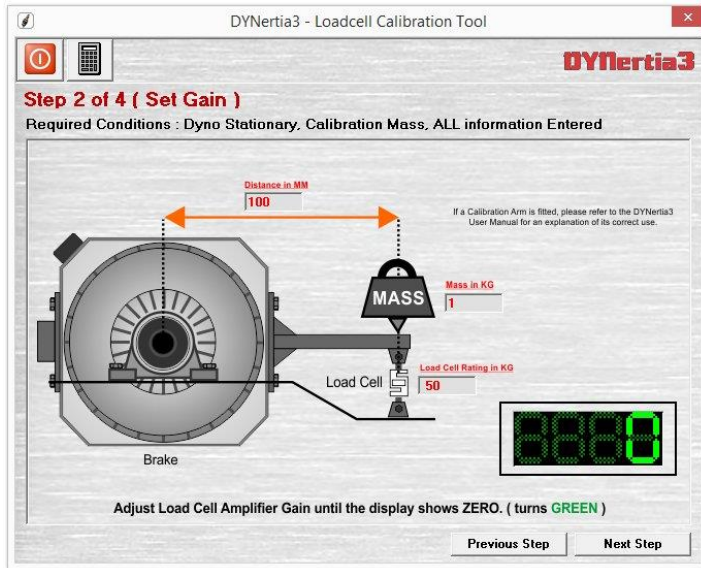


Note: The slider next to channel 5 will adjust the filtering to the load cell and affects the smoothness of your graph!

Step 1: explains setting the load cell amplifier so that it reads zero with no load (actually a small 100mV offset is automatically set with this guided calibration sequence)



Adjust the amplifiers 'Offset' (zero or null) until the digits turn green as shown on the Right then press 'Next Step' button.

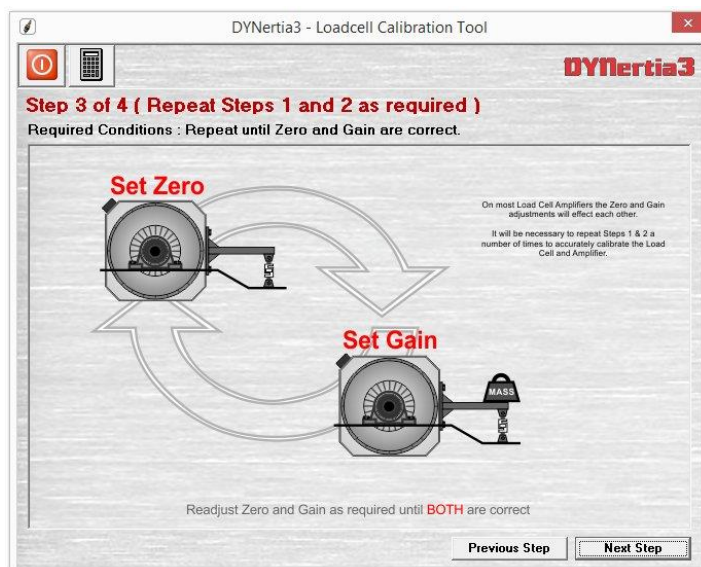


Step 2: requires applying a known weight and entering the data. Then the load cell amplifiers 'Span' (gain) is adjusted till the digits turn green.

Software calculates the target figure based on full scale being equal to the load cells rating and the target being a portion of this based on the test weight you use.

Note: When calibrating, accuracy will suffer if a test weight is used that is too low a percentage of the load cells maximum scale, use a high a weight as practical.

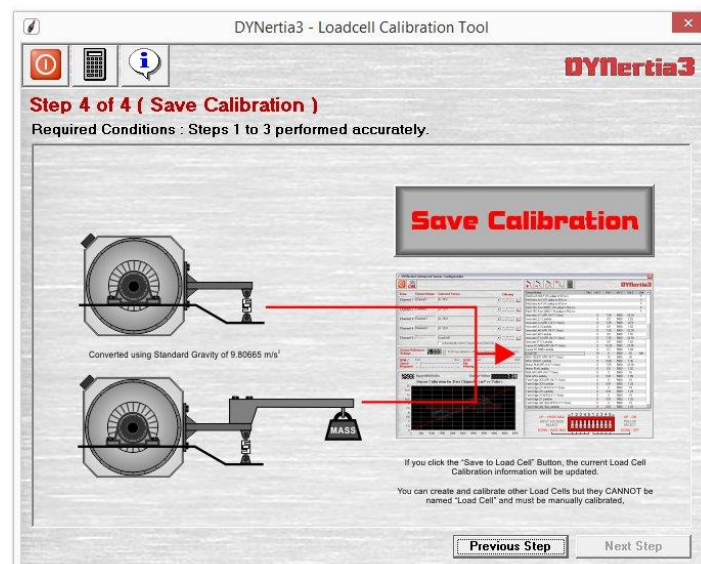
You can add an extension to or lever above the load cell mounting arm (called a 'calibration arm' in the industry) so less actual weight is needed during calibration (i.e. it acts as a lever to apply more effective weight onto the load cell), but factor this in so you only enter the actual weight applied to the load cell.



Step 3: asks to repeat the process to confirm. This is because with a load cell amplifier adjusting Span will effect Offset and vice versa.

Note: Please see your DTEC Load Cell Amplifier technical sheet if you are having trouble adjusting the settings within range.

You can also alter your load cells entered rating figure slightly if required to get the adjustments within range.



Step 4: asks you to press the 'Save Calibration' button.

It then loads the data into the sensor configuration screen under a sensor called "Load Cell".

It will automatically set the voltage that represents no load and also set the torque that is represented by 5000mV

Tip- Press the "i" button you can see the data that will be used by the software.

You can check the data if you like by using-
Torque = load (weight in Kg applied x 9.80665) x length of torque arm in meter's



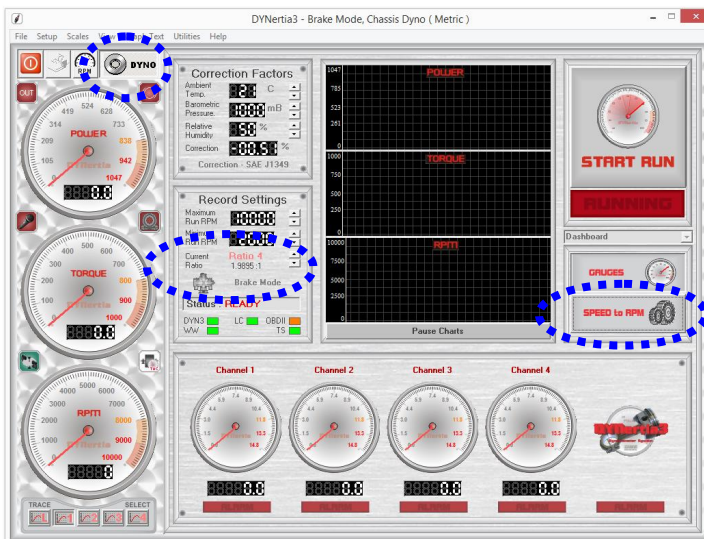
Displaying Engine RPM (One Method)

We are going to test for now without a direct engine RPM signal (such as from the optional 'RPM Adapter').

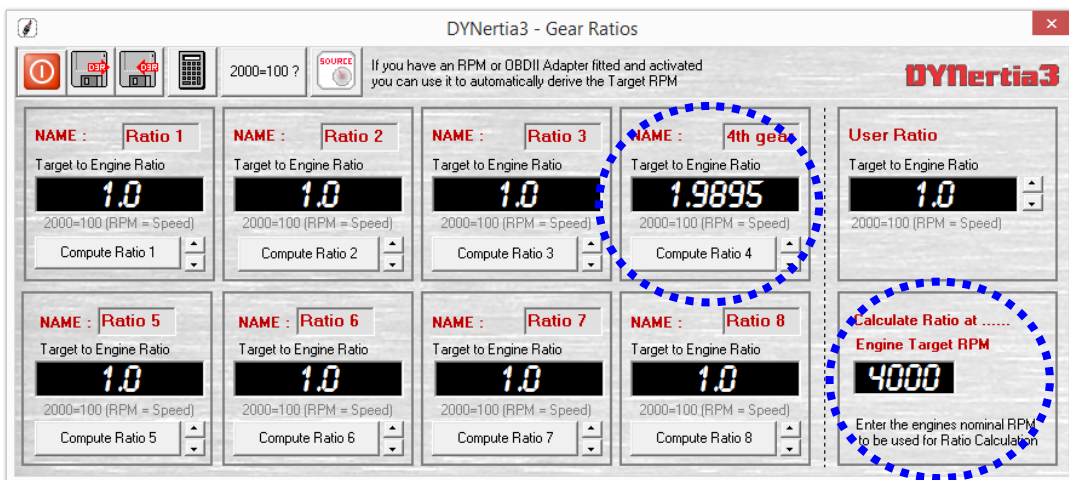
Knowing the engine RPM allows the torque to be derived to the engine, not just be at the rollers. As we do not have direct measurement of engine RPM we have three options for testing. We could test quickly (as most commonly do) with just Speed as the graph X-axis (kph instead of RPM), but we will choose another option which we will call 'option 3'; this option will assume the vehicle has its own tacho fitted already.

All RPM input options and the effect on testing are explained in the main manual!

Option 3- Ratio Teach- If DYNertia3 knows the drive ratio between the engine and the dyno it can calculate actual engine RPM from the dyno roller RPM (as measured by the sensor).



Press the 'Speed to RPM' button, right hand side on the main 'DYNO' Window to make the Window shown below visible.



Drive vehicle until it's tacho matches the 'Engine Target RPM' in your test gear (4000 RPM in this example shown; alter this set point if RPM not suitable for your vehicle) then simply press a 'Compute Ratio' button, we will use "Compute Ratio 4" in this example to remind us we are testing in 4th gear. The calculated ratio will now appear in the box above the button (1.9895 in this example)

Tip- If you know the RPM at a certain speed you can enter this and DYNertia3 will calculate the drive ratio. For example if it does 3500RPM at 150kph then enter "3500=150" manually in any of the 'Target to Engine Ratio' fields.

Press Enter and your setting will be transferred to the 'Record Settings' panel for "Current Ratio" (in the 'DYNO' Window).

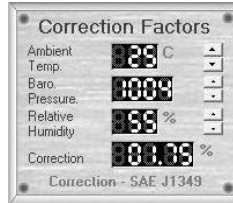
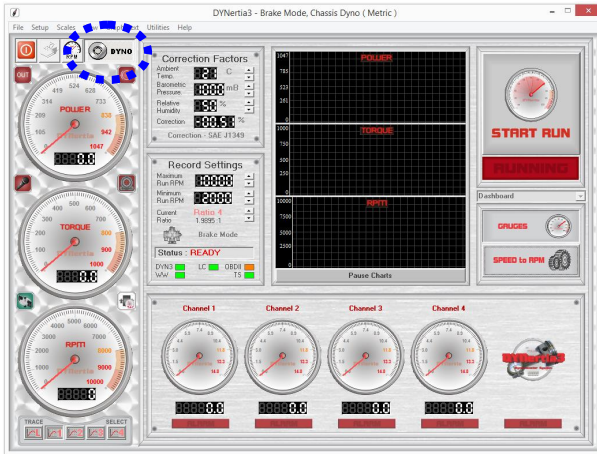
That's it! DYNertia3 now knows the engine RPM for any speed driven in the gear just used. You can 'teach' other gears also if you want to do testing in multiple gears. The ratio you want to use for testing can then be selected in the 'Record Settings' panel for "Current Ratio" (in the 'DYNO' Window).

DYNertia3 Quick Start (Brake OL- Chassis type)



Performing a Brake 'Ramp' Test Run

All dyno run setup is done in this main 'DYNO' Window:



Enter the current Temperature, Barometric pressure and Humidity into the 'Correction Factors' box. If you have no weather data then go to menu option "Setup/Software" and select "No correction" in "DYNO Correction Systems".

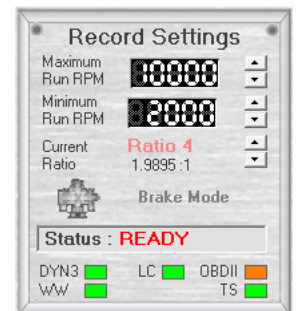
If you have the optional 'Weather Watch' hardware all this data is updated automatically, but first you must select the menu option "Setup/Communications", connect the unit and 'Link' the Weather Watch hardware.



Note: 'Speed' mode (kph) is often best as 'RPM' mode requires the drive ratio to be set and not alter (as it will with gear shifts or torque convertor slip). Button is top Left on main 'GRAPH' screen.

It is important to set 'Record Settings' 'Run Minimum & Maximum' to a suitable start and finish RPM for the test. Set the maximum run RPM to just below the RPM you wish to test to, set the minimum RPM to just above the RPM you start testing at.

Check that 'Current Ratio' is set to "Ratio 4", assuming this is the button we used previously to 'teach' a ratio in this example.



You are now ready to perform a test!



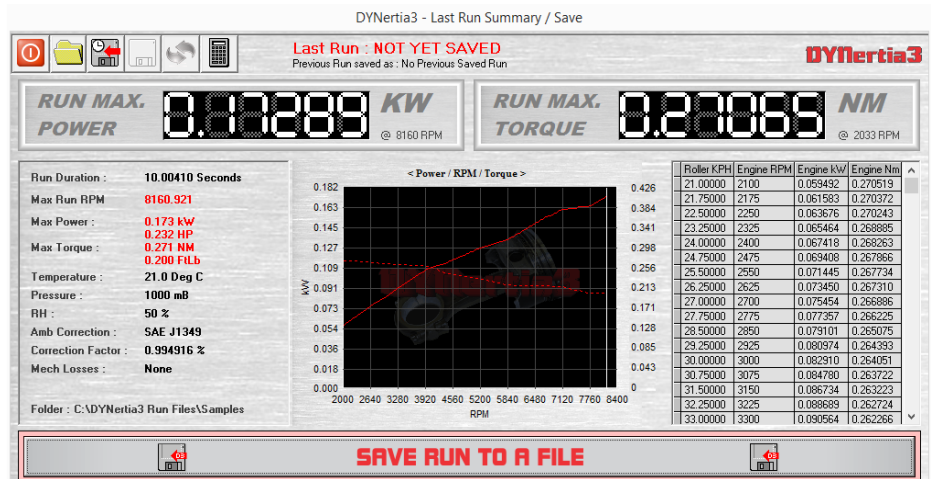
Drive in the test gear (4th in this example), hold the speed below what you have set for a 'Run Minimum' with the throttle wide open by using your brake load control.

Press 'Start Run' button.

Slowly release the brake load to allow the engine RPM to smoothly rise (when the 'Minimum Speed' is exceeded recording begins). When the maximum RPM you wish to test to is reached press 'Stop Run' button again to end recording.

After the test finishes you will be presented with a test run summary and you can decide now if you wish to save the run.

Tip: You can click on the graph in the summary to see the data highlighted in the table.



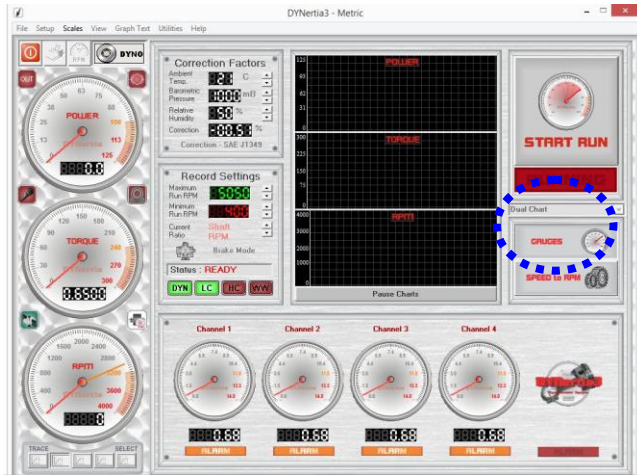
Enter a descriptive run file name for easy future reference. The default folder used is called 'Samples'!

DYNertia3 Quick Start (Brake OL- Chassis type)

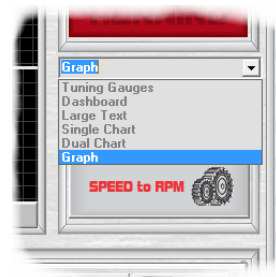


Observing the engine data

The available windows to view data in depend on the fitment of a second monitor.



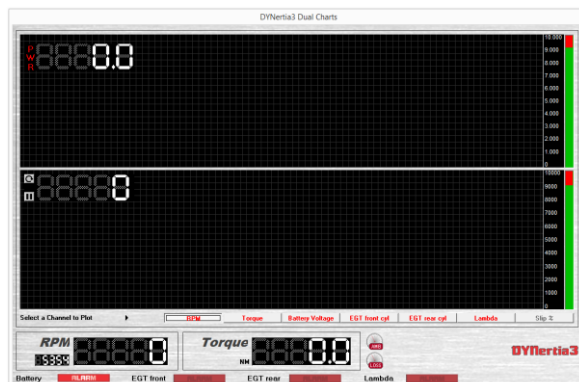
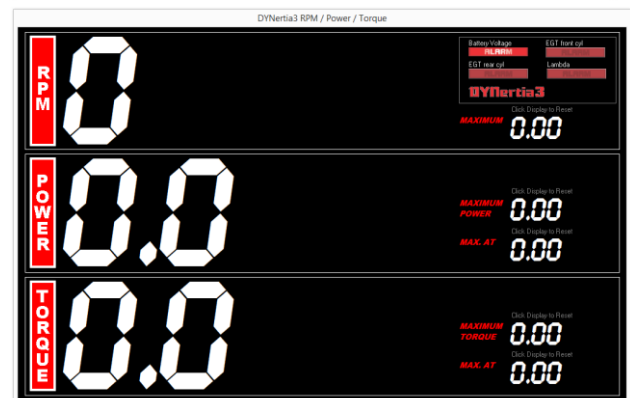
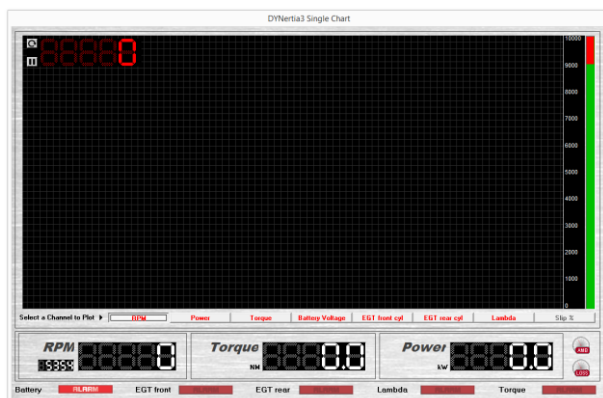
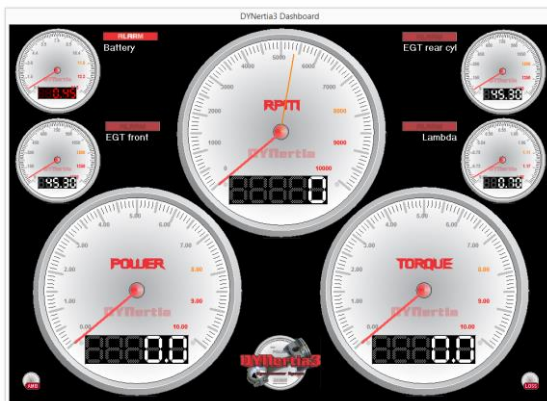
Due to limited screen space, with only a single monitor the data is displayed as shown to the Left. There are chart recorders and gauges for RPM, torque and power, whilst the 4 data channels are displayed on a second set of gauges with alarm limits.



If a multiple monitors are fitted then there will be a dropdown list of possible display Windows for the second monitor.

Note: Press the 'GAUGES' button to turn second display on and off.

Below is a preview of the Windows available on a second monitor, please see main manual for full details.

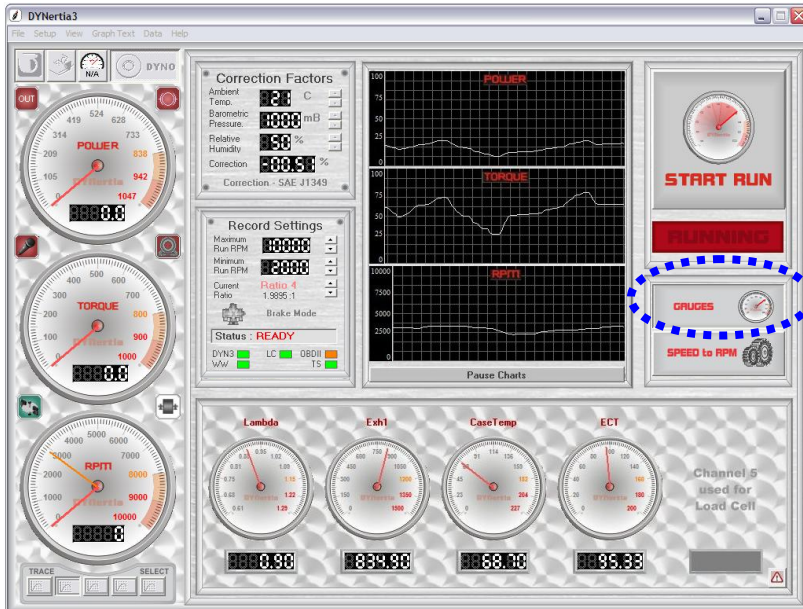




Performing a Brake 'Steady State' Test Run

There are 2 main methods of 'Steady State' tuning. One is to use the 'Gauges' screen to observe Torque/Power changes on the dial and chart recorders as modifications are made. The other is 'Step testing' where at various test RPM the data is recorded and used to create conventional graph traces.

Steady state tuning by monitoring live torque and power



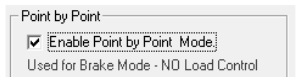
Press the 'GAUGES' gauges button on the main 'Dyno' screen and observe live the data as modifications are made.

Obviously the Torque reading displayed at a particular RPM is the main performance indicator.

Note: If a multiple monitors are fitted then there will be a dropdown list of alternative display Windows for the second monitor (see previous page)

Steady state testing using 'Step testing' (or 'Point by Point' as we call it)

Setting 'Point by Point' (menu choice 'Setup/Software/General') should be checked.



When you press the "Start Run" button a new button called "Save Current Readings" is now visible!

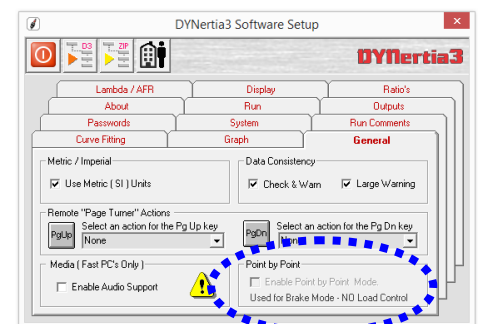
You can now drive the vehicle and apply dyno brake load to hold at any suitable RPM. When the RPM is stable, press the 'Save Current Reading' button to store that data.

Test at any RPM, in any Order!

Every time you press the 'Save Current Reading' button the new data is saved.

It is normal practice to test at set RPM intervals ('steps') but this is not essential.

When you press "Stop Run" button a graph trace will be created from your saved data points and this can be viewed like any other test Run trace.



Enter a descriptive run file name for easy future reference. The default folder used is called 'Samples'!



Viewing/Loading of Runs ('Graph' Window)

We will outline the basic functions needed for viewing, selecting and loading data from test Runs.

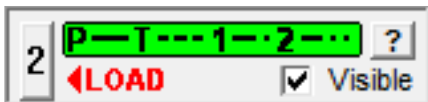
Loading test Runs into the Graph Window to view and analyze



With default software settings, If you have just performed a test then this 'GRAPH' Window will appear automatically.

The last Run you did will appear as a RED trace (not shown here) and any others already 'loaded' will be shown as various alternate coloured traces.

The scales are automatically set to the highest data values. To 'zoom' in or out of areas of interest on the graph use the "◀▶▲▼" buttons in the lower graph corners.



When Runs are 'loaded' into the GRAPH Window we use the 'Trace Set Controls' (coloured boxes beneath the graph) to control them, one for each of the 5 traces that can be viewed (actually 10 using secondary screen). To temporarily 'hide' any trace from view 'click' on its Check Box "☑", to view associated data and notes 'click' on the "?" button.

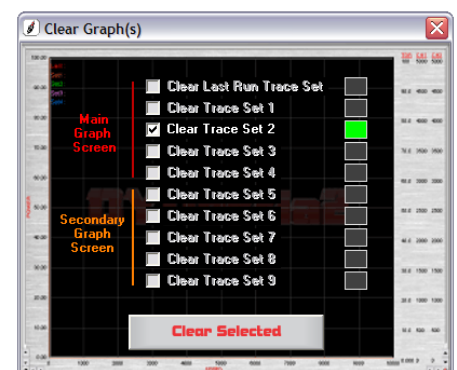
Load runs- To load a new Run into the graph for viewing or to change an existing one 'click' on a trace number (button numbered "2" in this example above), this will open our '**DYNertia File Explorer**' Window (detailed next page) where we can select a test Run to be shown as trace '2'.

In 'DYNertia File Explorer' you can select a Folder of choice and when each Run file is selected (one 'Left Click') its data table, its general notes, key data and preview graph are shown.

Single 'Right Click' on the Run file of interest and it will be loaded as the new 'trace set' back in the main GRAPH Window!

Clear runs- To remove traces from the graph (un-load them) press your keyboards Shift and Delete keys (or menu option "View/Clear Graphs").

Note: Files are not deleted or modified; they are just not selected for viewing.



Tip- DYNertia3 already has some test runs in a Folder called 'Samples', use these to learn the software operation.

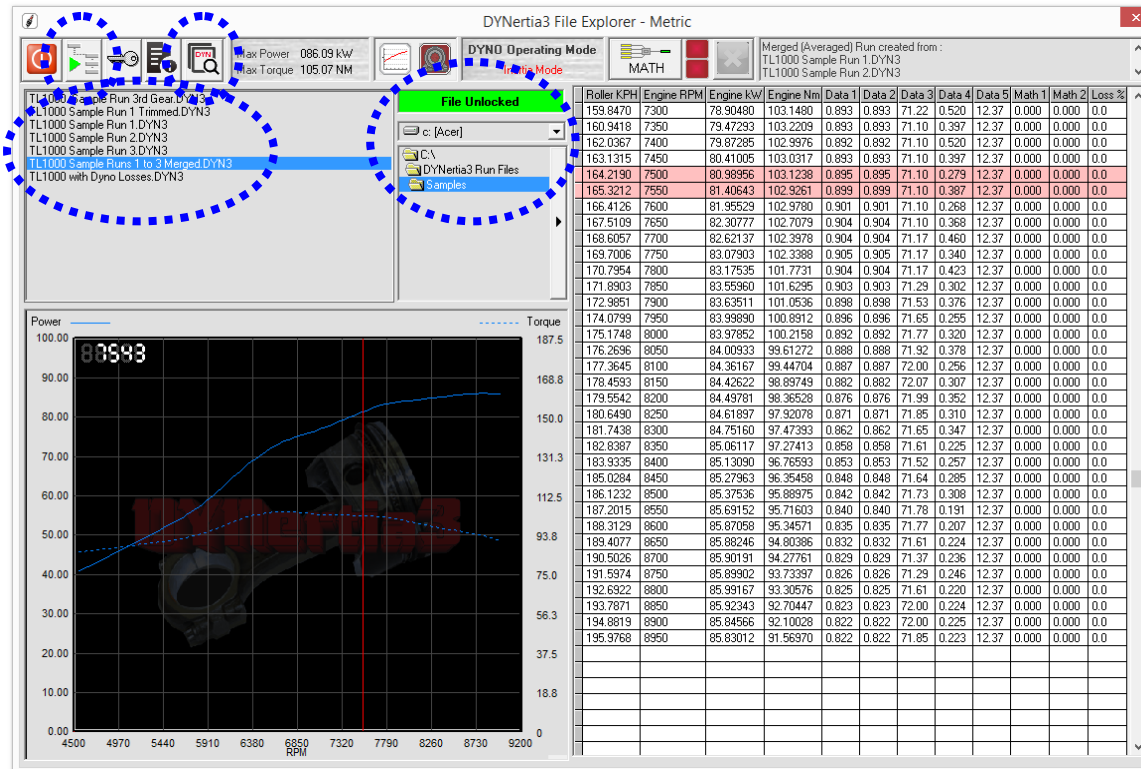
DYNertia3 Quick Start (Brake OL- Chassis type)



Finding Folders to view or to save tests into

As mentioned on the previous page, 'DYNertia File Explorer' is used to select a storage Folder of choice and when each Run file within it is selected (one 'Left Click') its data table, general notes, key data and preview graph are shown.

Single 'Right Click' on the Run file of interest and it will be loaded as the new 'trace set' back in the main Graph Window!



Tip - Clicking on the preview graph image will bring up a cursor line and highlight the corresponding data in the table.



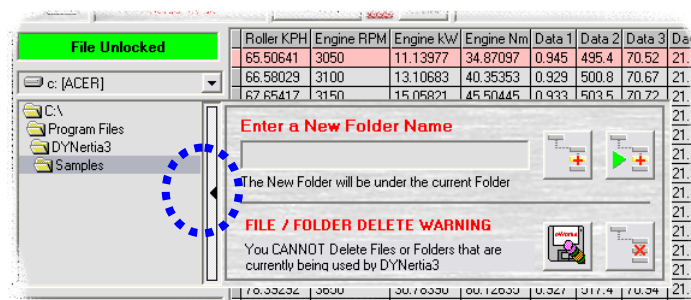
You can browse folders to view the contents of, or to store runs into, by using the 'Folder List' section (shown above, just below the green "File Unlocked" text box). You can also use the search function for finding DYNertia3 files on your PC.



Note: If you are selecting a Folder that you wish to use to save runs into then press the 'File Storage' icon (top LH). It will be this Folders content that is shown when then saving runs in the main Dyno Window!

Tip - 'DYNertia File explorer' can be opened from the menu option 'View/DYNertia File Explorer', by pressing 'ctrl + F' buttons or from the 'Trace Set Controls' (coloured boxes under graph) as discussed previously.

Creating/Deleting new Folders to save tests into



Next to the Folder list is a black arrow "►", 'Clicking' on this will open a menu that allows you to create/delete new Folders easily.



Once you type in a name, press the button shown to create the Folder and also set it as default. It will then be used to save files into and view when explorer is opened.

Pressing these buttons will delete a test Run file (disc/eraser icon) or respectively a Folder (cross icon)



Note: Standard 'Windows Explorer' ('My Computer') can also be used to delete, create or move Folders and files!

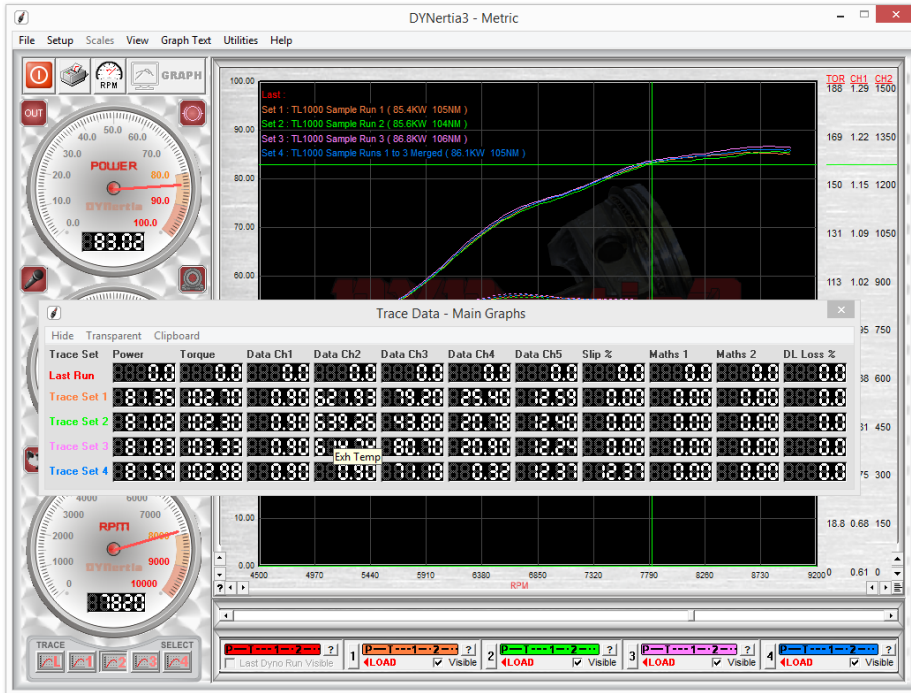
DYNertia3 Quick Start (Brake OL- Chassis type)



Basic Analysis of Saved Data

Basic analysis using the main GRAPH Window; refer to the full DYNertia3 manual for details.

The main Graph Window can be used for overlaying and analysing data from test Runs.



To analyse a trace choose the trace of interest by selecting it with the buttons underneath the RPM/speed gauge and then 'Click' on the Graph Window. The coloured cursor (matches selected trace) will indicate via the gauges the values present.

'Clicking' in the graphs Right hand side (where the scales are) will display the 'floating' data Window as shown to reveal information for all the traces.



Holding the mouse over a data box will show that data Channels label (e.g. Exh Temp)

Tip - Don't forget you can 'zoom' in or out of the graph, use the "◀▶▲▼" buttons in the lower graph corners.



'Click' on the "?" button in lower Left Hand graph corner displays a graph summary.

'Double Clicking' on any row in the graph summary will bring up full information on that trace (shown Right)

Main Graph Screen							
Source	FileName	Min RPM	Max RPM	Max Power	Max Torque	Correction	Mode
Last Run	No Trace Set Loaded	N/A	N/A	N/A	N/A	N/A	N/A
Trace Set 1	TL1000 Run 001	3000	9840.13	83.3128 kW	98.0789 Nm	1.007258 %	Inertia
Trace Set 2	Merged run 002 end 003	3000	9838.56	83.1644 kW	97.5512 Nm	1.007258 %	Inertia
Trace Set 3	TL1000 Run 002	3000	10095.85	83.7097 kW	97.5284 Nm	1.007258 %	Inertia
Trace Set 4	TL1000 Run 003	3000	9786.512	82.4708 kW	97.1527 Nm	1.007258 %	Inertia

Secondary Graph Screen							
Source	FileName	Min RPM	Max RPM	Max Power	Max Torque	Correction	Mode
Trace Set 5	No Trace Set Loaded	N/A	N/A	N/A	N/A	N/A	N/A
Trace Set 6	Merged run 001 and 002	3000	9838.56	83.1644 kW	97.5512 n	1.007258 %	Inertia
Trace Set 7	Merged run 002 end 003	3000	9838.56	83.1644 kW	97.5512 Nm	1.007258 %	Inertia
Trace Set 8	No Trace Set Loaded	N/A	N/A	N/A	N/A	N/A	N/A
Trace Set 9	No Trace Set Loaded	N/A	N/A	N/A	N/A	N/A	N/A

File Name : C:\Program Files\DYNertia3\Samples\TL1000 Run 002.DYN2

Gear / Ratio Configuration

Ratio Used : 2.835524:1 Ratio 4

Gear Ratio 1 : 1:1

Gear Ratio 2 : 1:1

Gear Ratio 3 : 1:1

Gear Ratio 4 : 2.835524:1

General Configuration / Settings

Date of Run : 10/12/10

Time of Run : 5:29:39 PM

DYNertia Version : File Type : DYN2 - DBV : 3.0.0

Ambient Correction

Temperature : 26 Degrees C

Pressure (millBar) : 997

Altitude Factor (%) : 1.007258 RAD % : 94.3973

Correction Mode : Correction - SAE J607

Run Summary

Run Duration : 5.056305 Seconds

Max RPM : 10095.85

Max Speed : 216.8337 KPH

Max Power : 83.70966 kW

Max Torque : 97.52836 Nm

Inertia : 4.9 Kg/M^2

Loss Correction : None

Loss File : N/A

Mode

Inertia Mode

Continuous

General Comments

Maths Configuration

Math 1 Title : Maths 1

Math 1 Desc : Calculated

Math 2 Title : Maths 2

Math 2 Desc : Calculated

Math 1 Scale Min : 0

Math 1 Scale Max : 5000

Math 2 Scale Min : 0

Math 2 Scale Max : 5000

Expressions used for Maths 1 and Maths 2

DYNertia3 Quick Start (Brake OL- Chassis type)



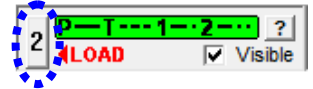
Windows for Further Analysis of Saved Data

A brief overview of more complex analysis, read the main DYNertia3 manual for many more options and details.

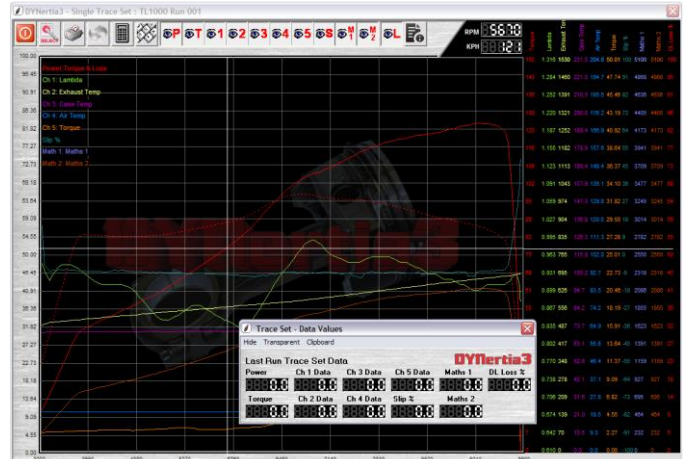
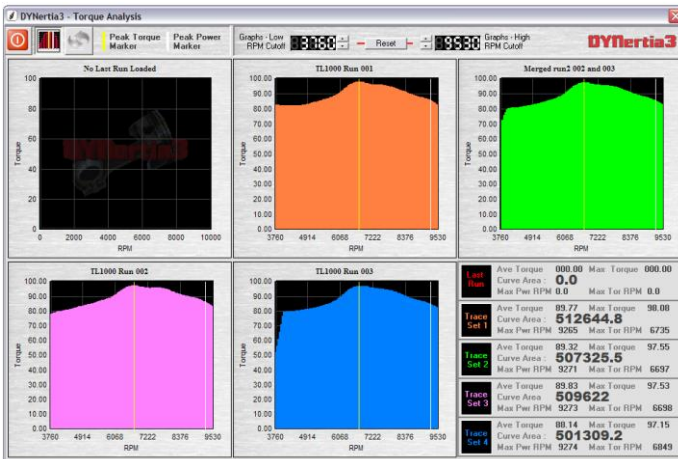


Most Windows used for analysing saved data are in the menu option 'View'

Load the test runs you wish to analyse into the GRAPH Window first using the trace set boxes as already explained.

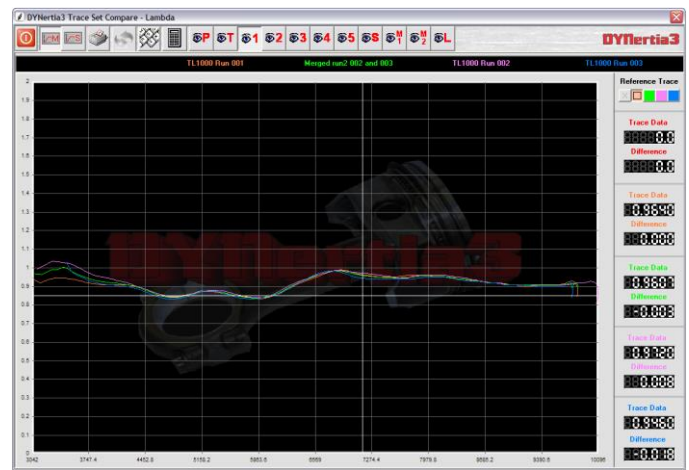
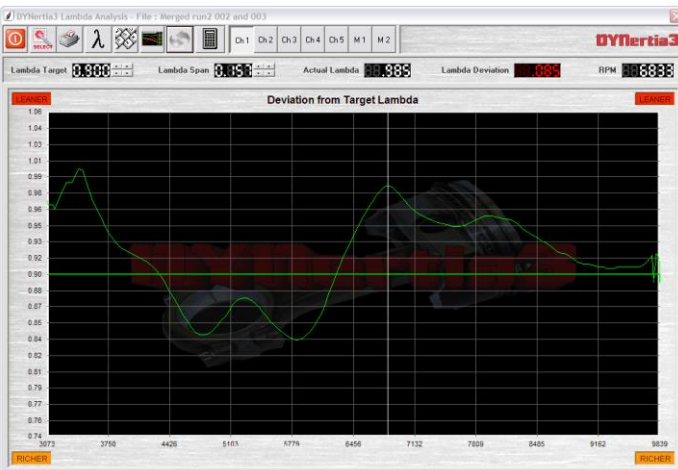


Note: Windows may only be relevant if the required data was collected e.g. Lambda deviation Window is only valid if you are recording Lambda into a data channel.



Torque analysis- Area under curve, averages, peaks, stats

Individual trace set- Detailed study of single Run data



Lambda/AFR deviation- How far from the target air fuel ratio

Compare- Difference between Runs (smoothed)



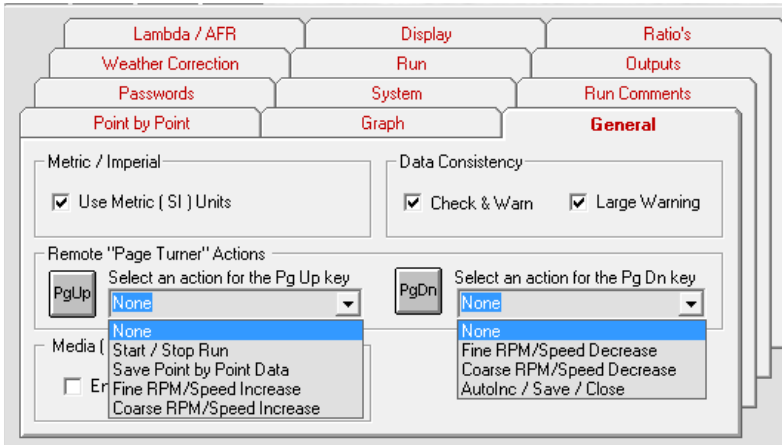
Point to point- time to accelerate between RPM or speed points.

There are many more options for getting the most from your testing. You can even export data directly into Excel to try out your own analysis concepts.



Shortcut Keys

In the menu 'Setup/Software/General' is the ability to allocate some functions to the 'page up' and 'page down' keys. This allows the opportunity to use wireless 'presenters' to control some dyno functions. Of course there are always wireless keyboards available that can be used.



Tip- 'Page down' can be set to "AutoInc/Save/Close" end this can greatly speed testing. "AutoInc" is to automatically increment a file name rather than re-typing it in!

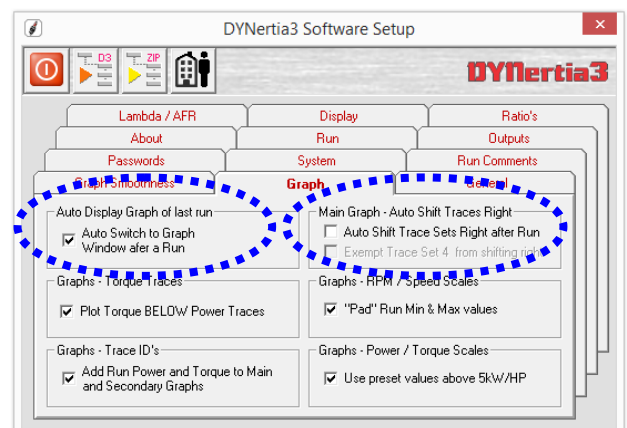
Key / Key Combination	Function	Scope	Key / Key Combination	Function	Scope
Ctrl Space	Start / Stops recording of a Run	All Run Modes	F1	Small decrease in Load Control Target RPM	Load Control fitted, Manual Mode
Shift Del	Open Clear Graphs Window	Graph Mode	F2	Small increase in Load Control Target RPM	Load Control fitted, Manual Mode
PgUp	Current : NO function selected	Depends on User selected function	F3	Large decrease in Load Control Target RPM	Load Control fitted, Manual Mode
PgDn	Current : NO function selected	Depends on User selected function	F4	Large increase in Load Control Target RPM	Load Control fitted, Manual Mode
Ctrl F	Open DYNertia3 File Explorer	Graph Mode	F6	Set Run Minimum RPM / Speed	All Run Modes
Ctrl S	Open Second Graph Window	Graph Mode	F7	Set Run Maximum RPM / Speed	All Run Modes
Ctrl I	Open Individual Trace Window	Graph Mode	F12	Toggles between RunTime Gauge Screens	Load Control fitted, used in Multi Monitor Mode

The menu 'Help/Shortcut Keys' lists the shortcut keys including those that are user assigned e.g. PgUp & PgDn

Tip- There are settings in the in the menu 'Setup/Software' that also effect the speed of testing-

Auto Display Graph of Last run: If you turn off it won't jump to the GRAPH screen after every test for analysis.

Main Graph-Auto Shift Traces Right: If you want to compare each run as it is done then this allows the previous runs to remain visible (only relevant if the Auto Display above is turned on).





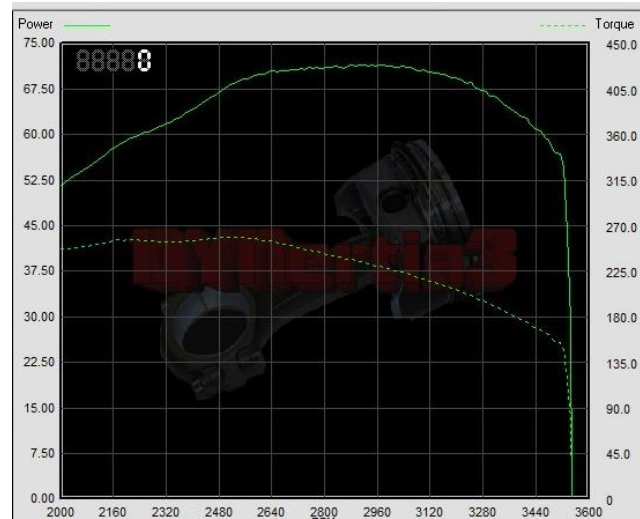
Troubleshooting

Assessing test results- Poor settings

Most poor results are either due to electrical interference (via PC, accessories or DYNertia hardware) or from poor selection of start and end points for the test.

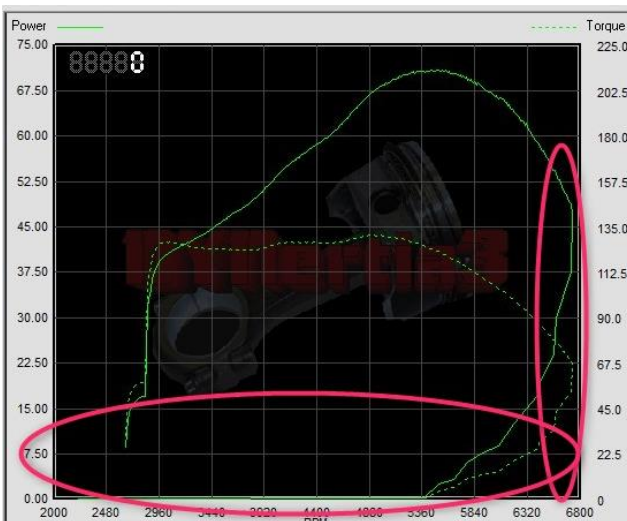


OK- It has a good start point and decisive end



OK- It has a good start point and decisive end.

Note: Personally I would set the max RPM lower to prevent the trace from dropping away and risking doubling back under.



NOT OK- Both these traces are running back under themselves at the test end. The trace should not run back under itself or you effectively end up with 2 power readings for every RPM point and this is confusing to calculations we run.



Both the above files have a poorly set Max RPM (set in "Record Settings" field as below).



There is nothing wrong with the data, just needs a better setup of max and min RPM/speed (start and end) at test time.



Assessing test results- Signal issues



NOT OK- Traces go back and forth.

This can be from ignition interference etc. but the image above is lacking any large 'spikes' that this usually creates.

Likely the engine RPM differs to roller RPM in the data so this implies an issue i.e. roller smooth, engine erratic. This could be from 'RPM adapter' (if used) was getting bad signal (poor connection, ignition missfire or even a rev-limiter cutting spark).

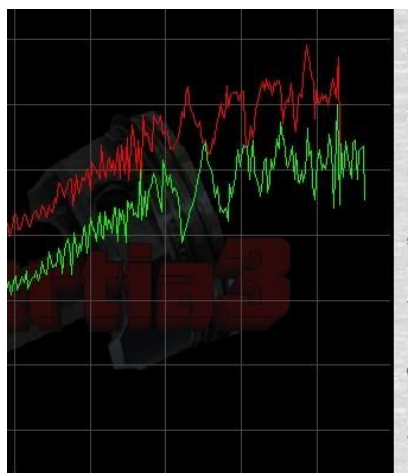
It is useful to realise the 'power' is calculated from the roller/flywheel mass speed sensor, not the "TAC" input (RPM adapter) which is used to derive 'torque' from the 'power' and is used for the X axis graph scale (RPM).

If you display the same data above in 'speed' mode (kph on X axis), and not 'RPM' mode it will remove the impact on the graph X axis scale, however the torque will still be erratic.

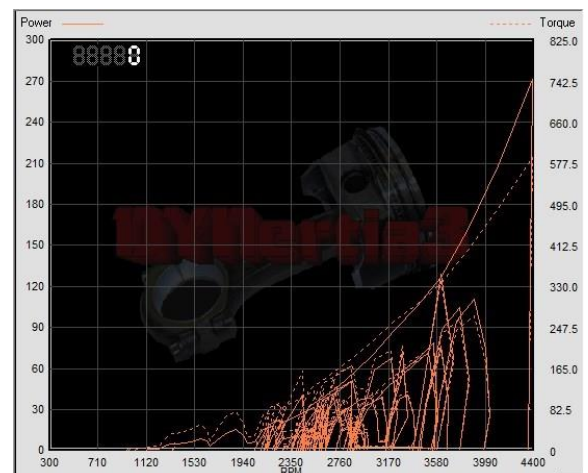
Below is same data above displayed in 'Speed' mode (kph is the X-axis), not 'RPM' mode. Nice power trace proves the theory that poor TAC signal was the issue.



Note: Best avoid the optional TAC input use if it's not stable or interference is impacting it, choose another RPM source option.



NOT OK- Power traces getting very erratic as speed rises. Mechanical issue creating variations in shaft speed (vibrations or 'snatch'). Greater filtering will help somewhat but not a fix.



NOT OK- Crazy data due to electrical interference from the ignition system.